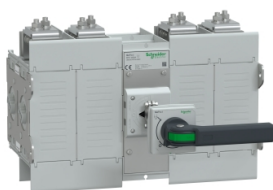


Product datasheet

Specifications



Manual transfer switch, GoPact MTS 2000, 4 poles, 1600A, 415VAC 50/60Hz, extended rotary handle, open transition

GM2AD4N16H4BEE

Main

Range of product	GoPact MTS
Product or component type	Manual transfer switch
Product name	GoPact MTS 2000
Device application	Change source of supply
frame size	2000
Suitability for isolation	Yes conforming to IEC 60947-3
transfer switch class	PC
poles description	4P
[Ie] rated operational current	AC-21A: 1600 A conforming to IEC 60947-3 AC-22A: 1600 A conforming to IEC 60947-3 AC-23A: 1250 A conforming to IEC 60947-3
[Ith] conventional free air thermal current	1600 A at 40 °C
[Ithe] conventional enclosed thermal current	1600 A (40 °C)
Rated operational power in W	710 kW AC-23A conforming to IEC 60947-3
[Ue] rated operational voltage	415 V AC 50/60 Hz
Breaking capacity	10000 A AC-23A
Rated making capacity	12500 A AC-23A
Control type	Extended rotary handle
Operating mode	Manual
Contact position indicator	Yes
mechanical interlocking	With mechanical interlocking
Locking options description	Padlocking in OFF position 1 to 3 padlocks

Complementary

[Ui] rated insulation voltage	1000 V AC
[Uimp] rated impulse withstand voltage	12 kV
[Icm] rated short-circuit making capacity	105 kA peak
[Icw] rated short-time withstand current	50 kA during 1 s conforming to IEC 60947-4-3 85 kA during 0.2 s conforming to IEC 60947-4-3
Number of contact position	3
mounting mode	Fixed
mounting support	Backplate

Connections - terminals	2 bars
Tightening torque	55 N.m
Mechanical durability	10000 cycles
Electrical durability	500 cycles 415 V
Width	540 mm
Height	339 mm
Depth	Without handle : 325 mm With handle : 500 mm
Net weight	57 kg
Standards	IEC 60947-3
Product certifications	IECEE CB Scheme

Environment

Electrical shock protection class	Class II
IP degree of protection	IP54 front face conforming to IEC 60529
Pollution degree	3 conforming to IEC 60664-1
Ambient air temperature for operation	-5...55 °C
Temperature derating table	40 °C (1600 A) 45 °C (1600 A) 50 °C (1600 A) 55 °C (1520 A)
Ambient air temperature for storage	-25...85 °C
Operating altitude	2000 m 100 % of In 3000 m 96 % of In 4000 m 93 % of In 5000 m 89 % of In

Packing Units

Unit Type of Package 1	PCE
Number of Units in Package 1	1
Package 1 Height	88.4 cm
Package 1 Width	60 cm
Package 1 Length	80 cm
Package 1 Weight	94.6 kg

Sustainability

Green Premium™ label is Schneider Electric's commitment to delivering products with best-in-class environmental performance. Green Premium promises compliance with the latest regulations, transparency on environmental impacts, as well as circular and low-CO₂ products.

Guide to assessing product sustainability is a white paper that clarifies global eco-label standards and how to interpret environmental declarations.

[Learn more about Green Premium >](#)

[Guide to assess a product's sustainability >](#)



Transparency RoHS/REACH

Well-being performance

Mercury Free

Rohs Exemption Information Yes

Pvc Free

Certifications & Standards

Reach Regulation [REACH Declaration](#)

Eu Rohs Directive Compliant with Exemptions

China Rohs Regulation [China RoHS declaration](#)
Product out of China RoHS scope. Substance declaration for your information

Environmental Disclosure [Product Environmental Profile](#)

Weee The product must be disposed on European Union markets following specific waste collection and never end up in rubbish bins

Circularity Profile [End of Life Information](#)